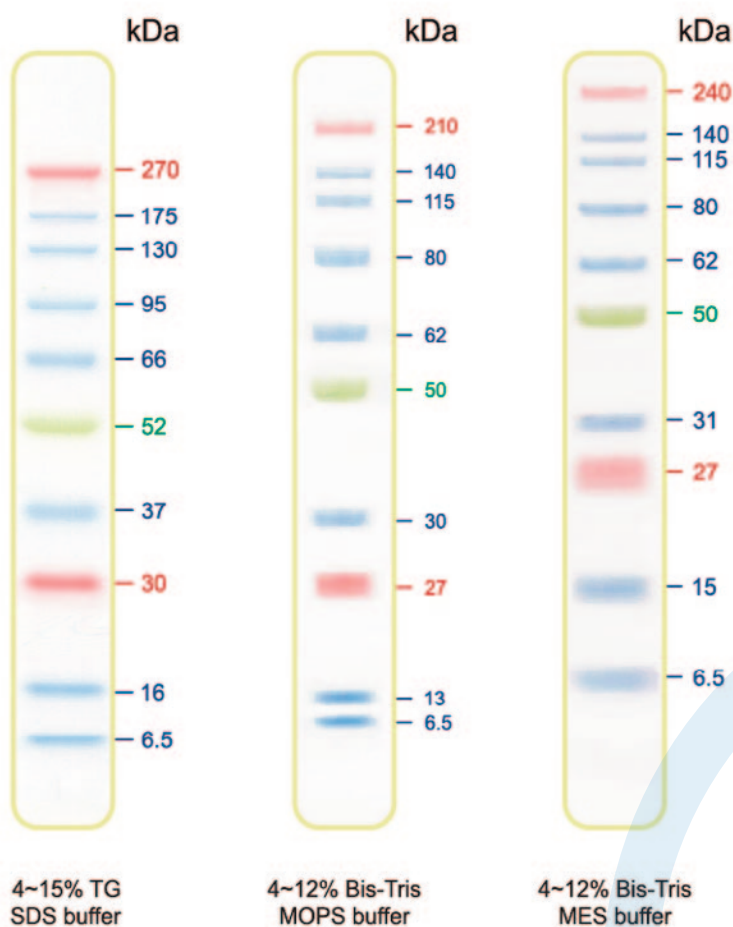


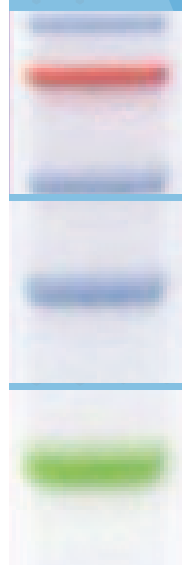
proteinLADDERS

Adding colour to your PAGE



BLUE Plus and BLUE Wide Range

recombinant protein markers are perfect for SDS-PAGE applications and blotting



- Plus (6.5-270kDa) and Wide (10-245kDa) molecular weight ranges available
- Coloured reference bands for easy identification in gels and blots
- Stable for 2 years at -20°C

Stable for up to 2 years if stored at -20°C and supplied in pre-stained gel loading buffer, Cleaver Scientific ready-to-load, BLUE Plus and BLUE Wide recombinant protein markers are perfect for SDS-PAGE applications and blotting.

Sizes range from 6.5-270kDa for BLUE Plus and 10-245kDa for BLUE Wide, making both markers suitable for accurate molecular weight determination of most cellular proteins.

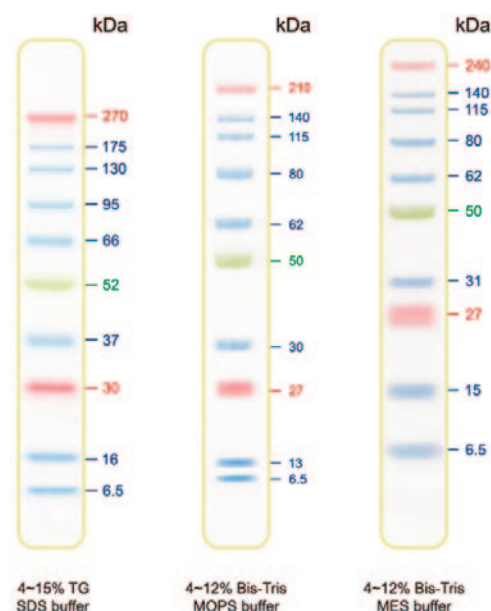
Each marker is covalently bound to a blue chromophore, except for the reference bands, to produce a ladder of evenly interspersed bands of uniform intensity. Coloured reference bands serve as visual indicators to monitor protein separation, verify transfer efficiency on membranes and quickly approximate the sizes of proteins. Both BLUE Plus and BLUE Wide markers can be detected at volumes as low as 2.5µl per well.

Technical Specifications

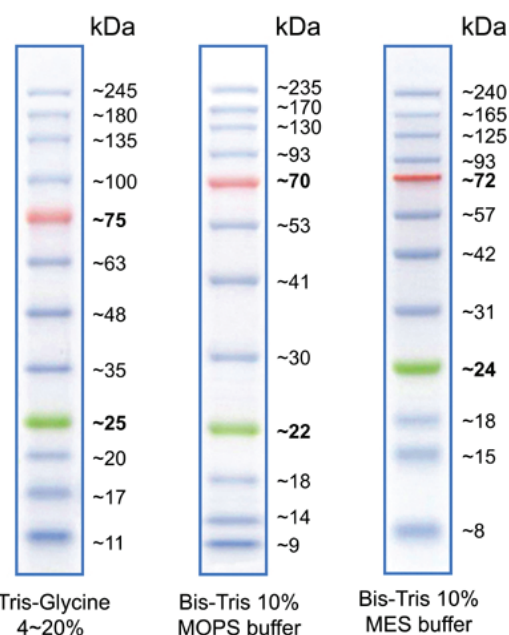
Cat.No.	CSL-BUPL	CSL-BBL
Size Range	6.5-270kDa	10-245kDa
Number of Bands	10	12
Reference Bands	30, 52 and 270kDa; orange & green	25 and 75kDa; green & red
Contents	Approximately 0.2-0.4 mg/ml of each protein in 62.5mM Tris-H ₃ PO ₄ , pH 7.5, 1mM EDTA, 2% SDS, 10mM DTT, 1mM Na ₃ N, 33% glycerol	Approximately 0.1-0.4 mg/ml of each protein in 20mM Tris-phosphate, pH 7.5, 2% SDS, 0.2mM Dithiothreitol, 3.6M Urea, and 15% (v/v) Glycerol
Volume Supplied	500µl	500µl
Storage	2 weeks at 25°C, 3 months at 4°C & 24 months at -20°C	
Loading Volume	2-3µl/well	2.5-5µl/well
Number of Applications	100-200	
Source	recombinant proteins, various sources	

Protein Ladder – Prestained

Adding colour to your PAGE



BUPL Blue Plus Range



BBL Blue Wide Range

ORDERING INFORMATION

CSL-BUPL	BLUE Plus Range Prestained Protein Ladder 6.5-270kDa, with 30, 52 & 270kDa reference bands, 1x 500µl vial
CSL-BBL	BLUE Wide Range Prestained Protein Ladder, 10-245kDa, with 25 & 75kDa reference bands, 1x 500µl vial

THISTLE SCIENTIFIC LTD

Unit 41, Somers Road Industrial Estate,
Rugby, CV22 7DH
United Kingdom

T_ +44 (0)1788 565300
E_ ENQUIRIES@THISTLESCIENTIFIC.CO.UK
W_ WWW.THISTLESCIENTIFIC.CO.UK